



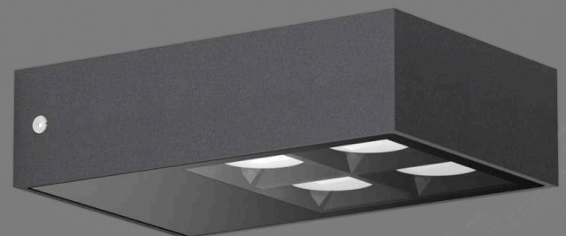
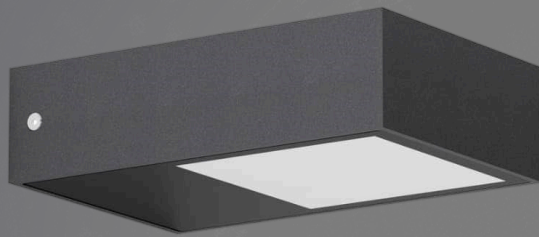
**BULLARD
BOLLARDS**
Think Bollard Think Bullard

INSTALLATION INSTRUCTION

LUXETTO

100-40 / MAX-100-40

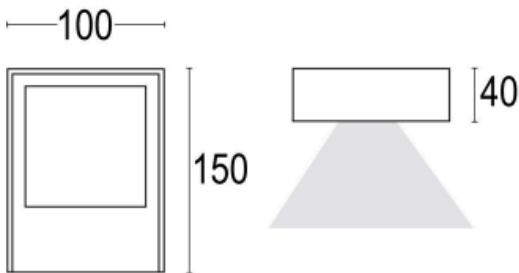
INSTALLATION TYPE:
SURFACE MOUNTED
WALL LUMINAIRES



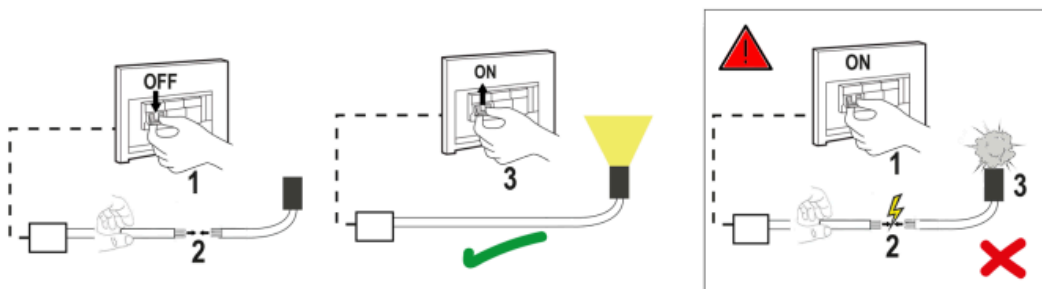
03/04/2026

(EN) WARNING: - THE SAFETY OF THE APPLIANCE IS ONLY GUARANTEED IF THE FOLLOWING INSTRUCTIONS ARE USED APPROPRIATELY; THEY MUST THEREFORE BE RETAINED. - ANY TAMPERING WITH AND/OR CONVERSION OF THE APPLIANCE IS PROHIBITED. IT MUST BE INSTALLED AND USED AS SUPPLIED AND IN ACCORDANCE WITH NATIONAL PLANT REGULATIONS. - DISCONNECT THE POWER SUPPLY BEFORE INSTALLING THE PRODUCT OR CARRYING OUT ANY MAINTENANCE WORK. - NO MODIFICATIONS MAY BE CARRIED OUT AS THIS COULD DAMAGE THE APPLIANCE. - INSTALLATION AND MAINTENANCE MUST BE CARRIED OUT BY QUALIFIED AND AUTHORISED PERSONNEL. - THE LIGHT SOURCE IN THE LUMINAIRE MUST BE REPLACED BY THE MANUFACTURER OR AN AUTHORISED SERVICE CENTRE. - ONLY USE THE LUMINAIRE COMPLETE WITH DIFFUSER. - NON-COMPLIANT INSTALLATION WILL INVALIDATE ANY WARRANTY.

MAXICOMPATTO



Switch-off the power supply

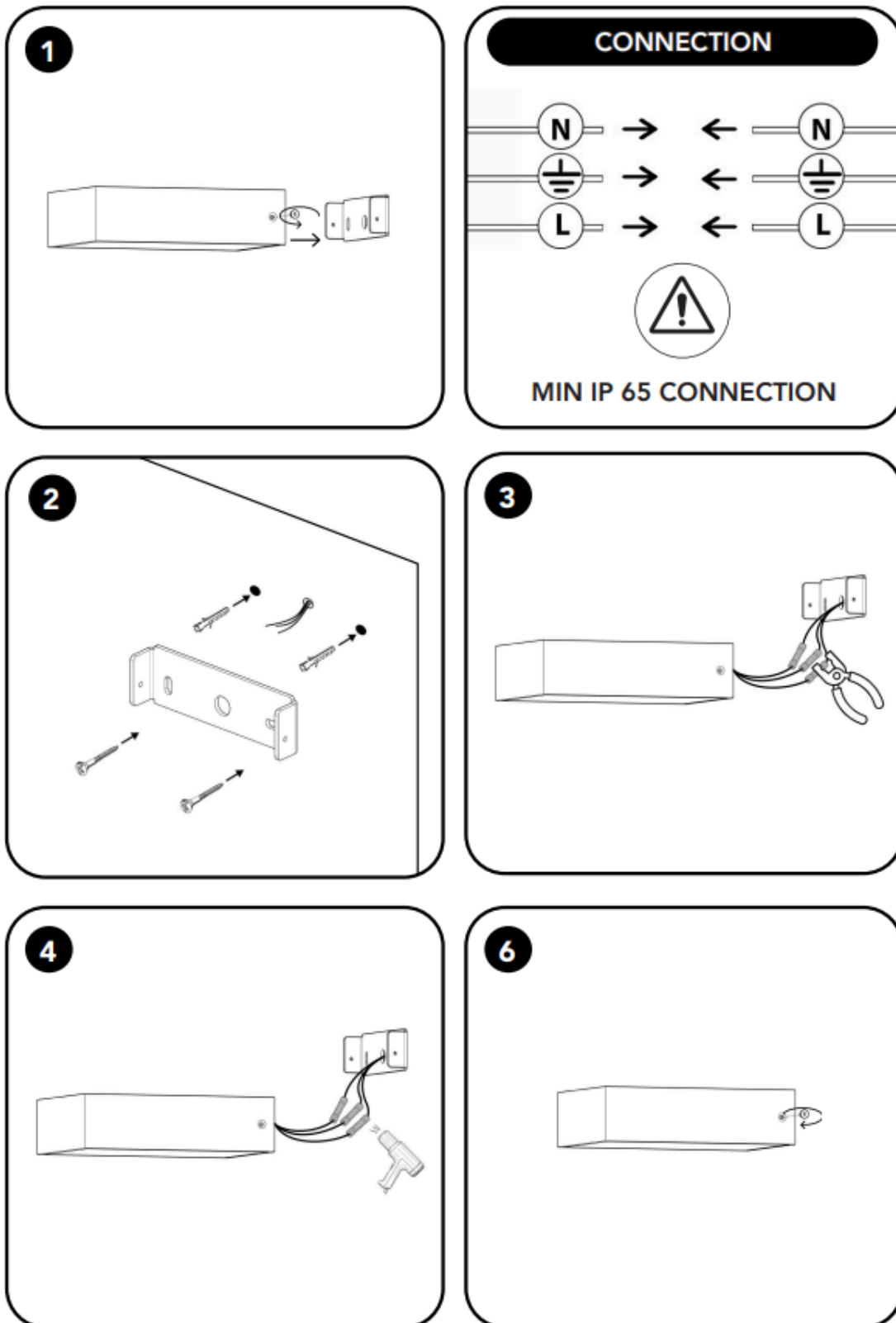


P.2

sales@gordonbullard.com
www.bullardbollards.com
1 877-964-4646



991 South Gull Lake Dr.
Richland, MI 49083
USA





IMPORTANT

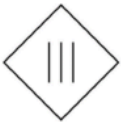
- To ensure equipment safety you must carefully follow the instructions below. This leaflet must be kept handy by personnel entrusted with all ordinary and extraordinary maintenance.
- Before any installation or maintenance operation on the bulb, make sure it is disconnected from power.
- Fit the correct bulbs, according to the type and power indicated on the lamp data label.
- Make sure the lamp technical features are compatible with the use you are going to make of it.
- Should you have any doubt, refer to the dealer or ask an electrician.
- When connecting to the mains, follow the correct colour code for power cables: (N) blue, (L) brown or black and, only for class I equipment, (T) yellow/green.
- When lamps are to be fitted to the wall directly through their ceramic parts, fasten the fixing screws lightly, to avoid breaking the ceramic.
- To clean the lamp on the outside, use a soft cloth, possibly wet. Do not use solvents or abrasive products. No liquid must get in contact with the lamp interior parts.
- Do not touch the equipment with dirty hands.



= Class I equipment, must be connected to an earth terminal.



= Double insulated lamp, does not need earthing.



= Electrical equipment in class III, electrical safety guaranteed by low voltage tension, does not require grounding



= Minimum distance to be observed from all lit up objects.



= Replace immediately the safety glass, if damaged, with the original part.



= The lamp uses low pressure bulbs, and needs no protection glass.